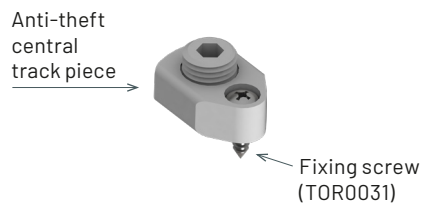


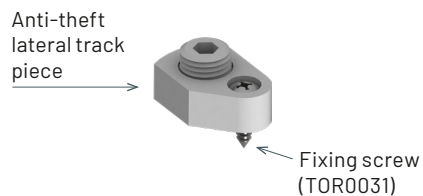
## MOUNTING INSTRUCTIONS ANTI-THEFT SYSTEM TANDEM SERIES

### PIECES

#### POL0132 TAN anti-theft central track



#### POL0133 TAN anti-theft lateral track



### PREPARATION OF THE PARTS:

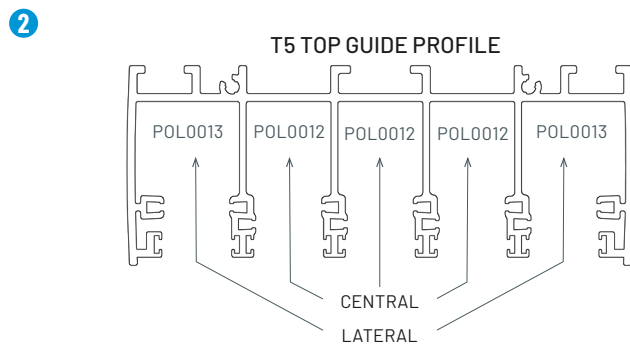
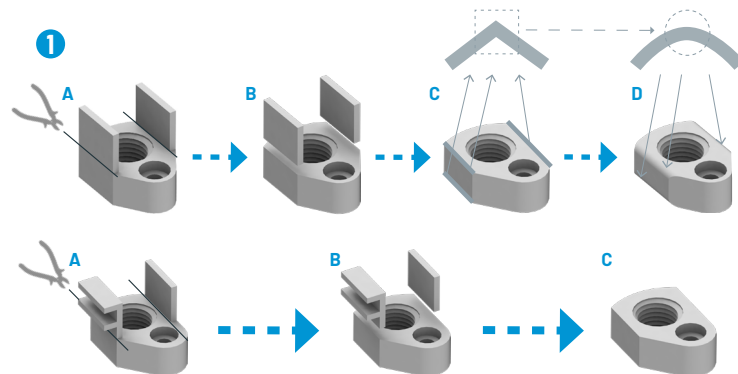
To include the anti-theft system on a Tandem system already installed, the anti-theft parts POL0132 and POL0133 must be modified. The steps to modify them are the point **1**.

Each kit is made up of a set of anti-theft parts and a TOR0031 set for fixing to the upper guide.

Two parts for each sliding panel will be installed, making a difference depending if the panel is on a central or a lateral track. On the image **2** we can see the position of each part.

We recommend to fix the anti-theft parts approximately 100 mm inwards from each panel (see **3**).

These parts will be inserted on an edgewise position as shown on figure **4**, once it's inside the top guide, they turn, leaving



a hole where the screw head is pointing downwards. Then, they will be screwed with the screw TOR0031.

The POL0133 must be fixed properly, according to the position indicated on **5**, leaving the hole for the fixation screw and the part attached to the inner side of the profile.

Finally, regulate the height of the threaded stud with an allen-6 key, so that it doesn't interfere with the panel when it slides. (See **6**).

**For any further information  
please contact our Technical  
Department by phone via  
952 198 752.**

