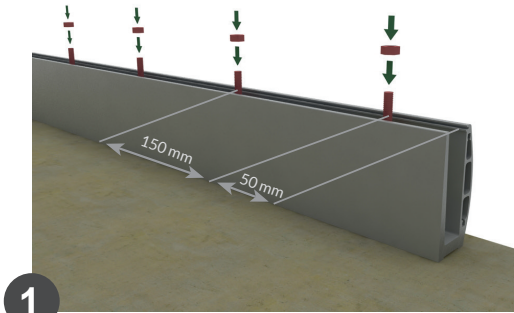
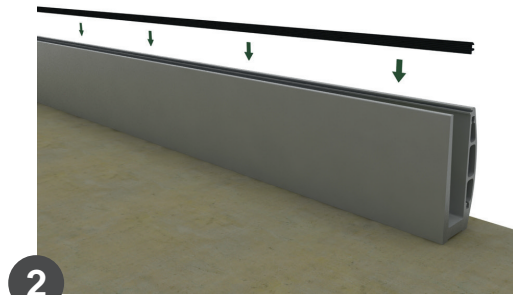


The surface where the railings will be installed must be previously prepared, perfectly leveled and with gutters if necessary.



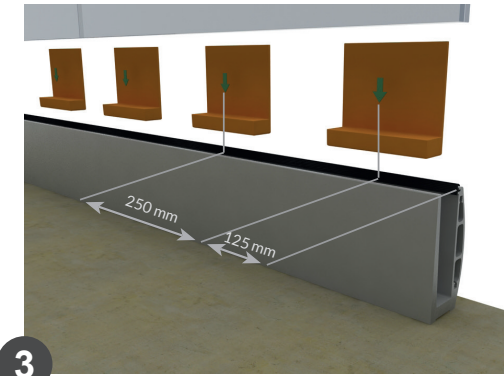
1

The distance between fixations is 150 mm and 50 mm from the ends, considering a chemical anchoring composed of fixing resin and a M10 threaded rod (120 mm embedded).



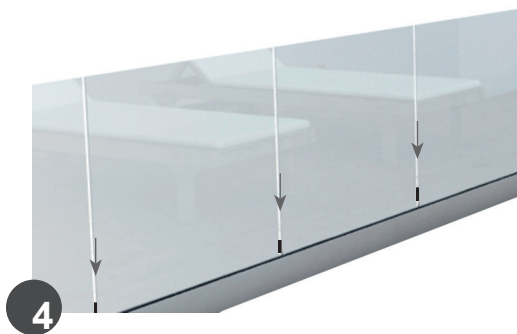
2

The seal of the outer side of the railing profile will be introduced by pressure.



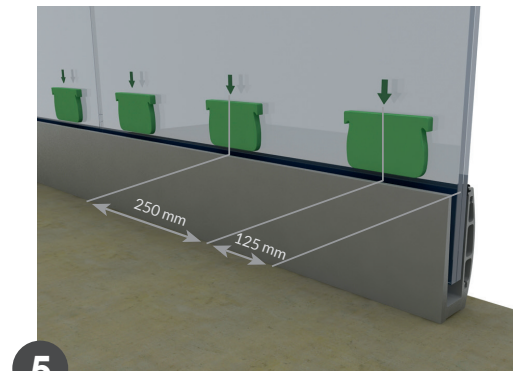
3

The bases will be introduced according to the position and distance indicated on the drawing.



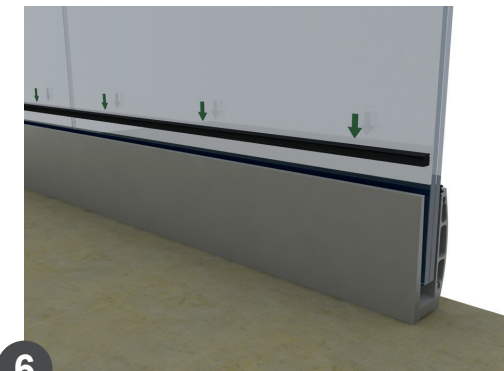
4

The glasses will be introduced with 10 mm space between each piece, using the foaming-adhesive seal to fill the gap inside the profile between the pieces of glass.



5

The fixing wedges will be introduced by pressure centered in the bases previously installed.



6

The seal of the inner side of the railing profile will be introduced by pressure.