

INSTALLATION AND USE GUIDE PLEATED BLIND SYSTEMS

STANDARD AND BASIC PRO SERIES

*These plans are specifically designed to help you run a complete safe operation and extend the life of the product.

INTRODUCTION

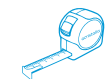
This document is intended for the user and the installer, and contains information to be considered for the correct use and installation of the blind. Acristalia is not responsible for any alterations or modifications made to the product, nor for defects caused by improper installation, and will not be liable for any damages or losses that may result.

INSTALLATION

Before starting, verify that the product is in proper condition by checking for the absence of visible dents or defects and ensuring it is complete, including all accessories and small parts. Confirm that the product dimensions and the opening measurements are compatible, and that the load capacity of the anchoring surfaces is adequate for the requirements of the installed and in-use blind.

REQUIRED TOOLS

Certain tools will be essential for the proper installation of the product, along with ensuring the availability of all necessary components for installation (brackets, screws, and, if needed, corner brackets).



Tape measure



Pencil



Phillips screwdriver

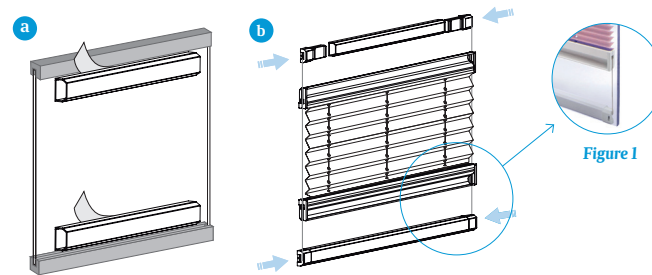
INSTALLATION – ADHESIVE MODEL FOR GLASS

For the installation of this pleated blind model, **it is not necessary to consider the thickness of the glass**. Simply follow the corresponding steps:

a. First, **make sure to clean and degrease the part of the glass where the adhesive profile will be placed**. Once done, attach the profile and **allow the adhesive to dry for at least 30 minutes**.

b. Then, **place the clips at the top, ensure the cords are taut, and install the blind**. Repeat the same operation for the lower clips.

It is crucial to pay attention to the correct positioning of the blind and cords, as shown in Figure 1.



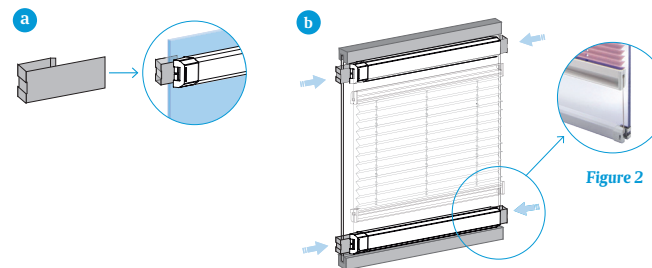
INSTALLATION – STRAP CLIP MODEL

This installation model **allows you to reposition the height of the pleated blind profiles if needed**. To install it, follow the instructions below:

a. **Insert the profile** approximately halfway into the strap clip.

b. **Position the blind** where it will be installed and **press the strap** until it snaps securely, **first on one side, then on the other**.

It is crucial to pay attention to the correct positioning of the blind and cords, as shown in Figure 2.



USE AND MAINTENANCE

GENERAL SAFETY WARNINGS

Ensure there are no obstacles in the path during opening and closing movements.

Do not place objects on the blind.

If you detect any defect or malfunction in the blind's operation, inform your supplier.

Do not force the opening/adjustment mechanisms; if the operation is not smooth, **check if something is obstructing the path**.

If you have any doubt, don't hesitate to contact your supplier.

MAINTENANCE

Cleaning using ladders, scaffolds, or other equipment to operate at different heights **must be carried out by competent personnel, adopting risk prevention measures** proportional to the inherent hazard and the potential consequences.

Cleaning the blind is essential to protect it against mold formation caused by the accumulation of dust or other materials.

Ensure the blind is immobilized during maintenance operations.